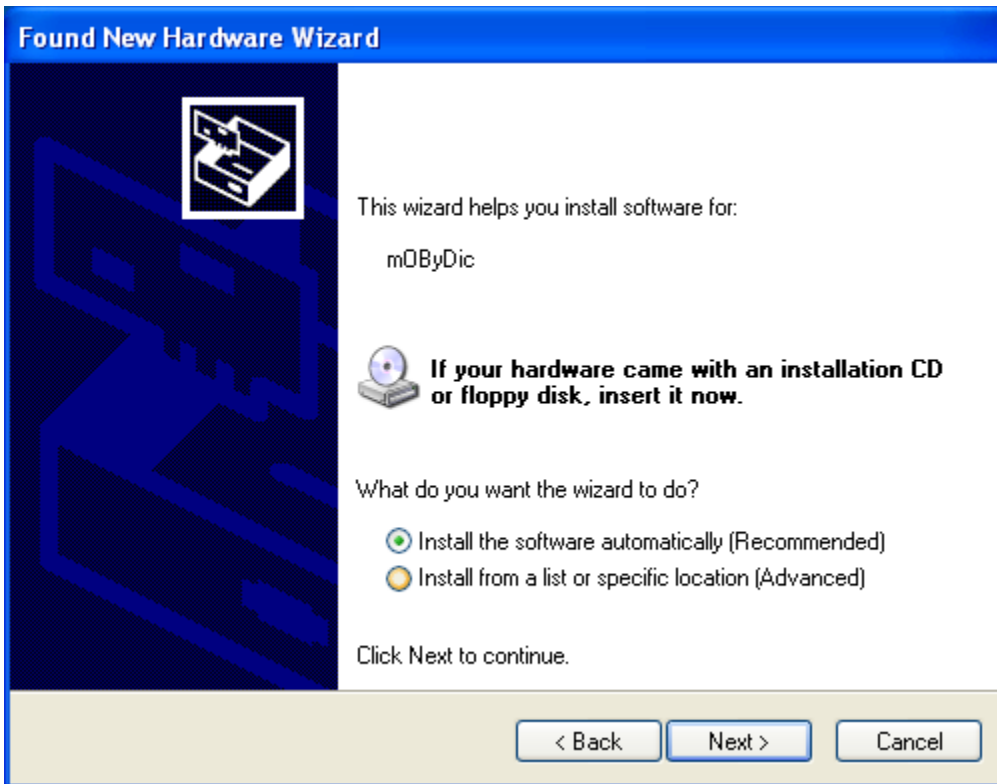


USB mOByDic XP Driver Installation (Quick Guide)

- 1) Insert your Digimoto Installation CD into your CD/DVD Drive
- 2) Insert your USB mOByDic scan tool into an available USB port
- 3) This will bring up the Found New Hardware Wizard pictured below



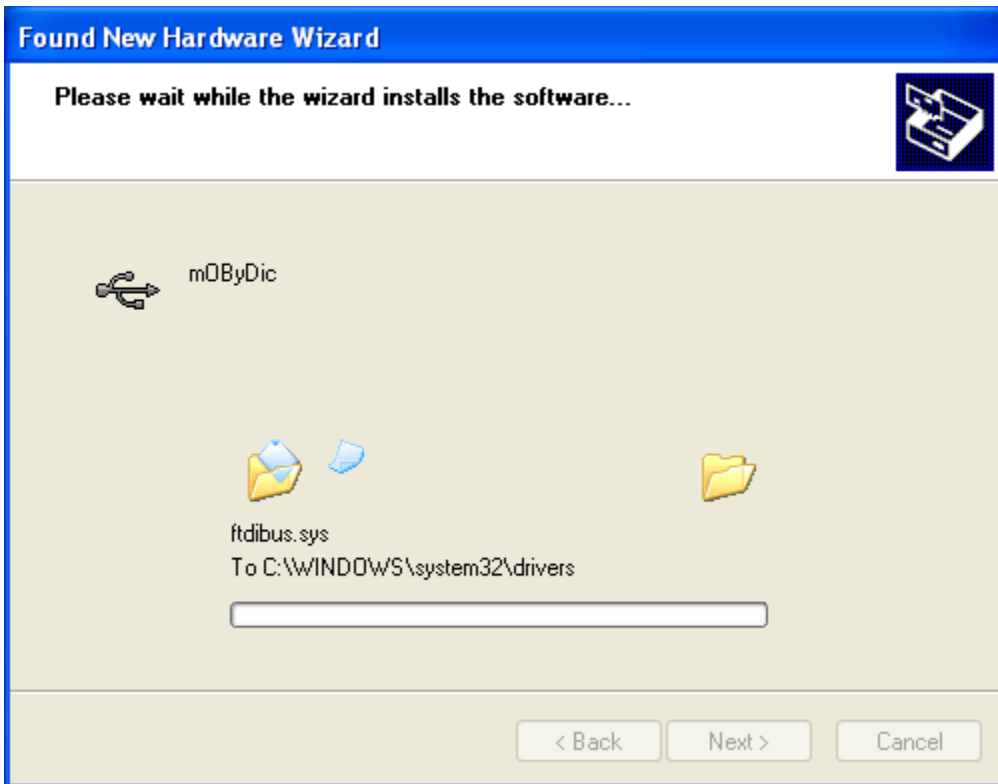
- 4) Select “No, not this time” and click Next to continue
- 5) This will bring up the install software window pictured below



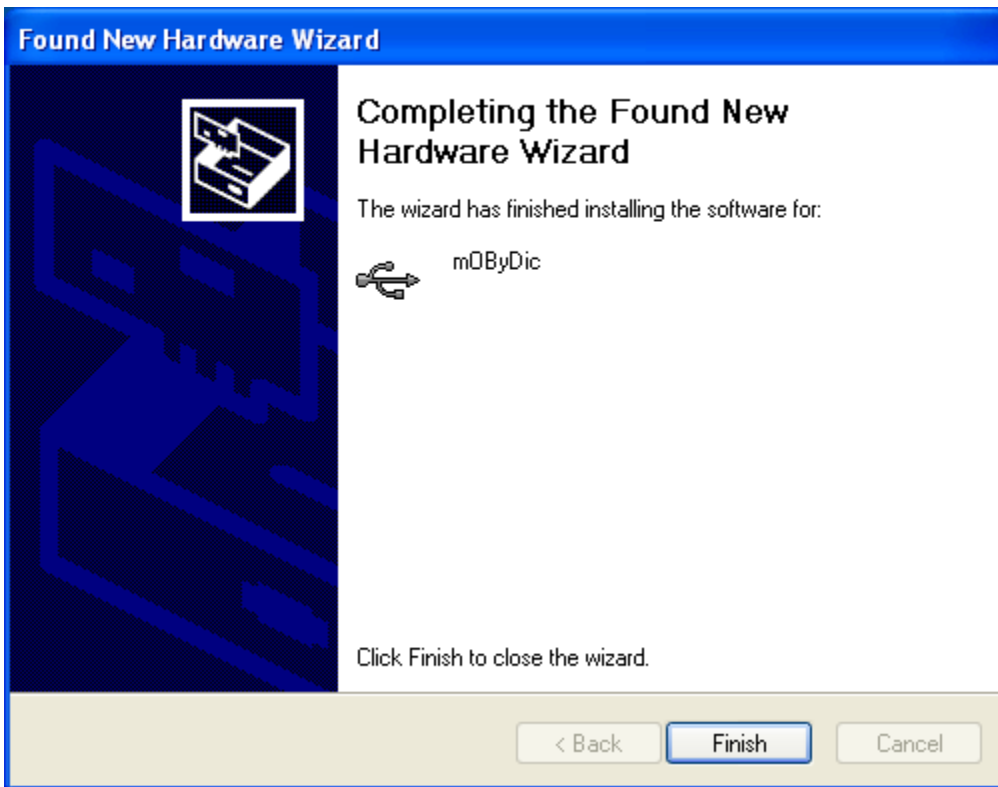
- 6) Select “Install the software automatically” and click Next to continue
- 7) This will bring up the unsigned drivers acknowledgement window pictured below



- 8) Click “Continue Anyway” to continue
- 9) The USB drivers will now load



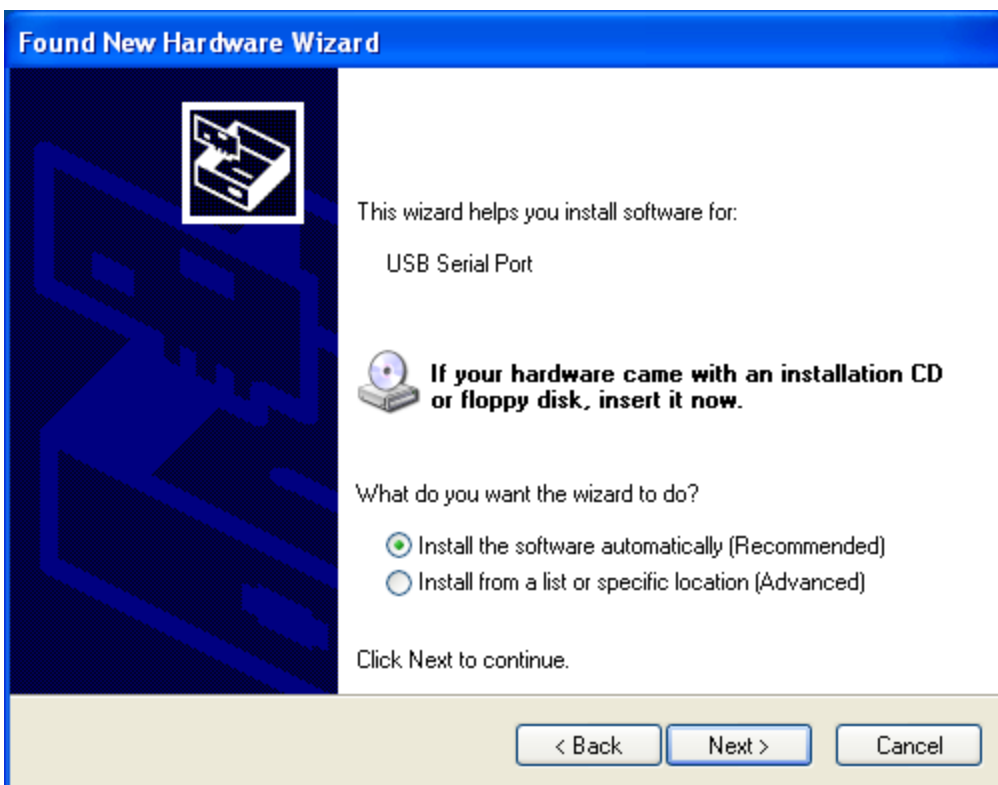
10) After the USB drivers finish loading it will bring up the Completed window pictured below



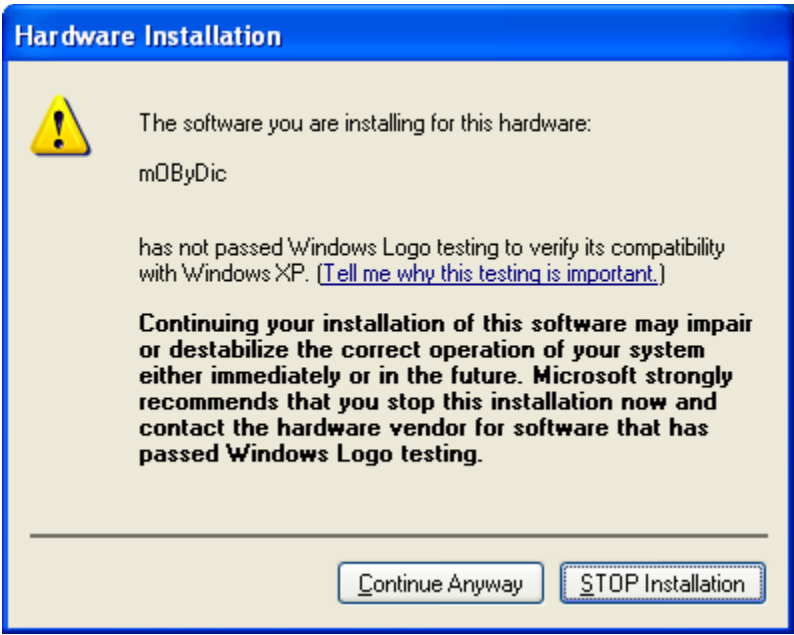
11) The New Hardware Wizard will continue by installing the USB Serial Converter



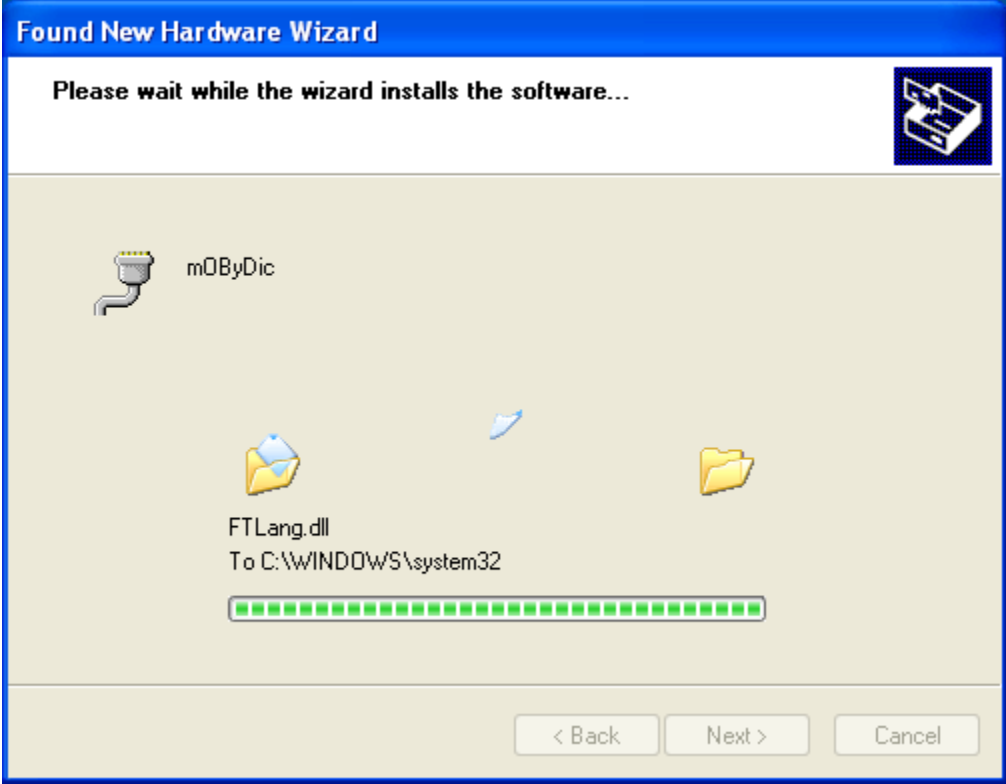
- 1) Select “No, not this time” and click Next to continue
- 2) This will bring up the install software window pictured below



- 3) Select “Install the software automatically” and click Next to continue
- 4) This will bring up the unsigned drivers acknowledgement window pictured below



- 16) Click "Continue Anyway" to continue
- 17) The USB drivers will now load



18) After the USB drivers finish loading it will bring up the Completed window pictured below

