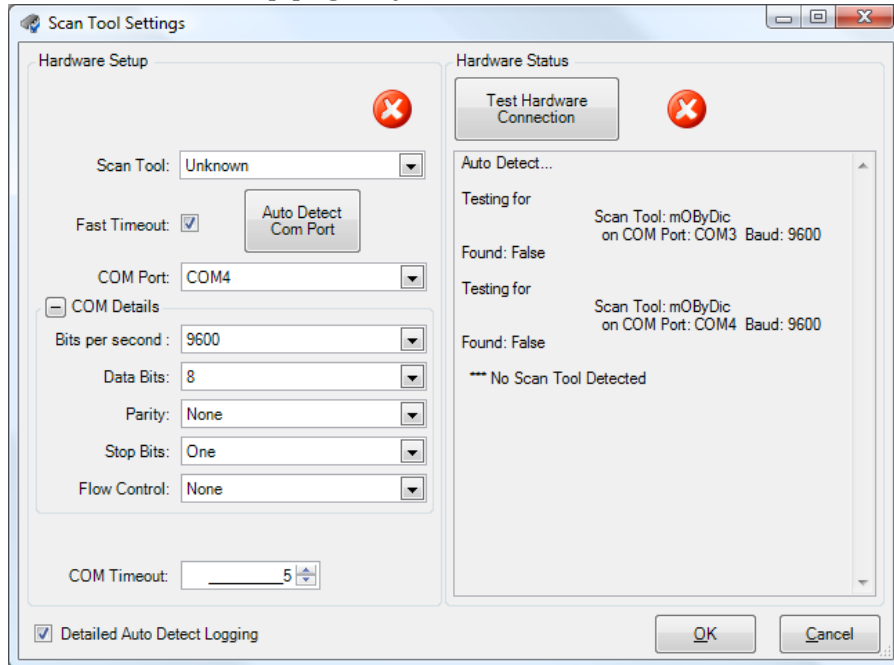


NO SCAN TOOL DETECTED USB

The hardware setup page says “No Scan Tool Detected” now what?



1. Plug the USB cable into your computer and tool does Windows recognize it?
2. Do you get any sort of tone or request to load the drivers?
3. If windows does not recognize that you have plugged in a USB device or you get a message stating that one of your USB devices is not functioning properly, then check all the connections, try a different USB port, or try another USB cable if you have one.
4. If you get a found new hardware message then go to the “USB mOByDic XP Driver Installation” instructions and install the 2 drivers.
5. If you hear a tone, but there is no prompt to install drivers, and you have already verified that the port and cable are functioning properly, you can check for the driver installation by going to your Device Manager and see if the tool is found there in one of 2 places, see the screen below.
6. IF you see the mOByDic listed in both places and you are getting a “No Scan Tool Detected” message, are you plugged into a vehicle? The scan tool gets its power from the car and will not be detected unless you plug it into a car that has been turned on, preferably running **before** you plug it into the OBDII port. If you have also done this, try closing Digimoto and reopening it and then connecting to the tool. If you are still having trouble connecting to the tool at this point, it is time to email support@digimoto.com.

