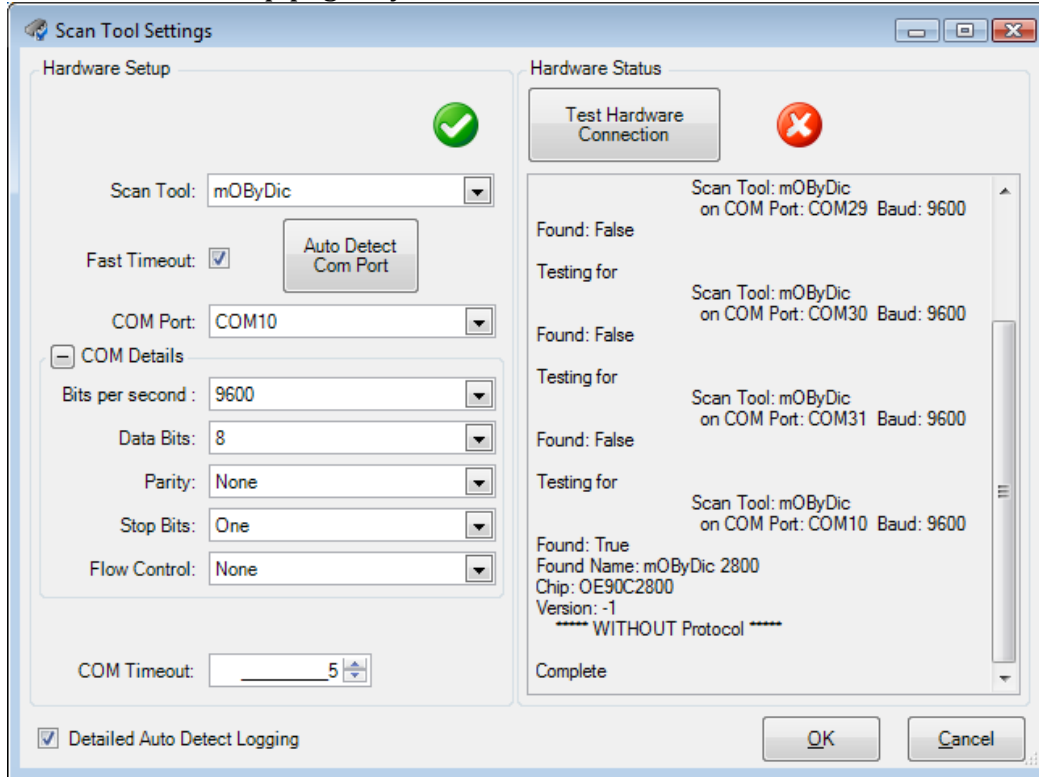


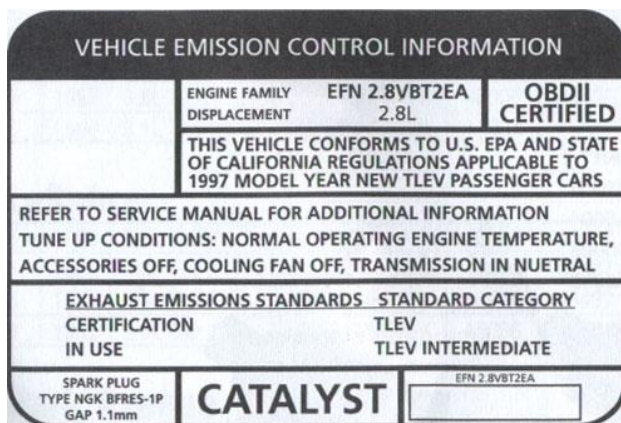
NO PPROTOCOL

The hardware setup page says “No Protocol” now what?



This message means that the scan tool and your car are not communicating. It usually means that either you did not start the car **BEFORE** plugging the scan tool into the OBDII port or the car is not OBDII or EOBD compliant.

1. Please try unplugging your mOByDic or other scan tool from the OBDII port of your vehicle.
2. Close the Digimoto software.
3. Start your vehicle.
4. Plug the scan tool back into the OBDII port of your vehicle.
5. Open the Digimoto software and go to the **Scan Tool Settings** screen. Select your scan tool and use the **Auto Detect Com Port** button.
6. If you are still not getting a protocol, then verify the vehicle is OBDII compliant by looking under the hood for a sticker similar to this.



If you are still having trouble connecting to the vehicle at this point, it is time to email support@digimoto.com.