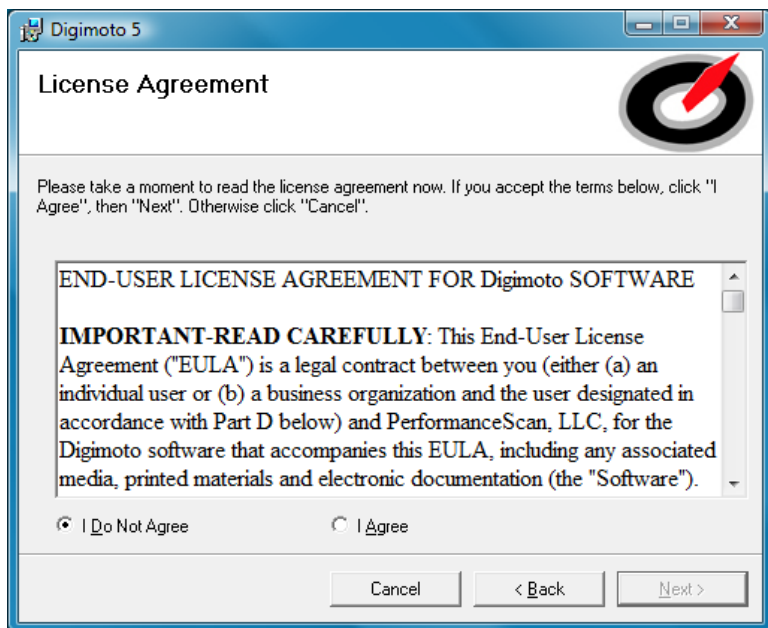


## DIGIMOTO 5 Installation Directions

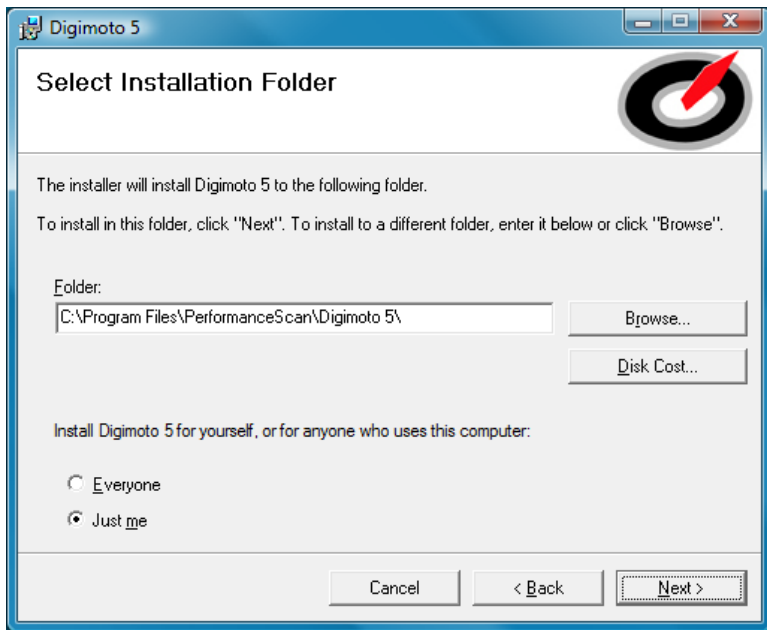
- 1) Open the **Digimoto5** CD, E:\Digimoto5 in this example.
- 2) Double Click **setup.exe**.
- 3) If you are running VISTA or Windows 7 you may get this message: An unidentified program wants access to your computer. **CLICK ALLOW**. You will get this Setup Wizard screen.



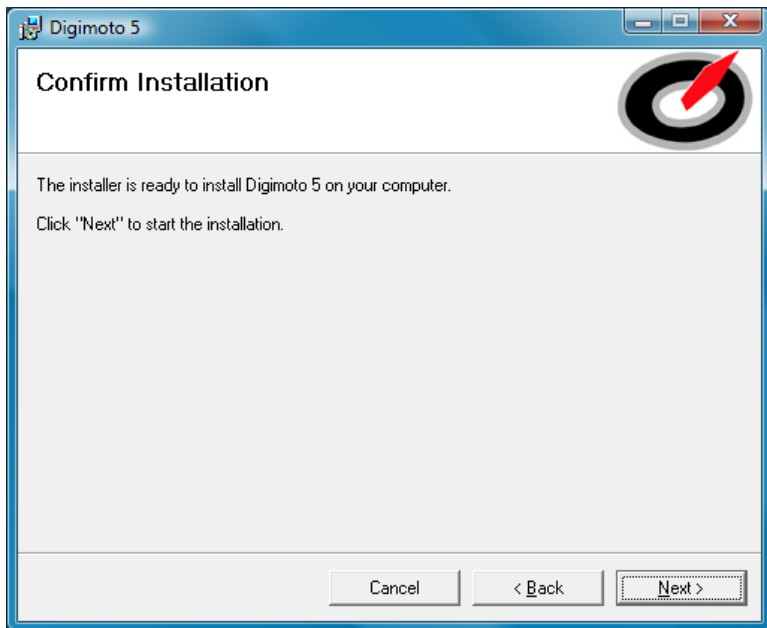
- 4) Click **Next**.



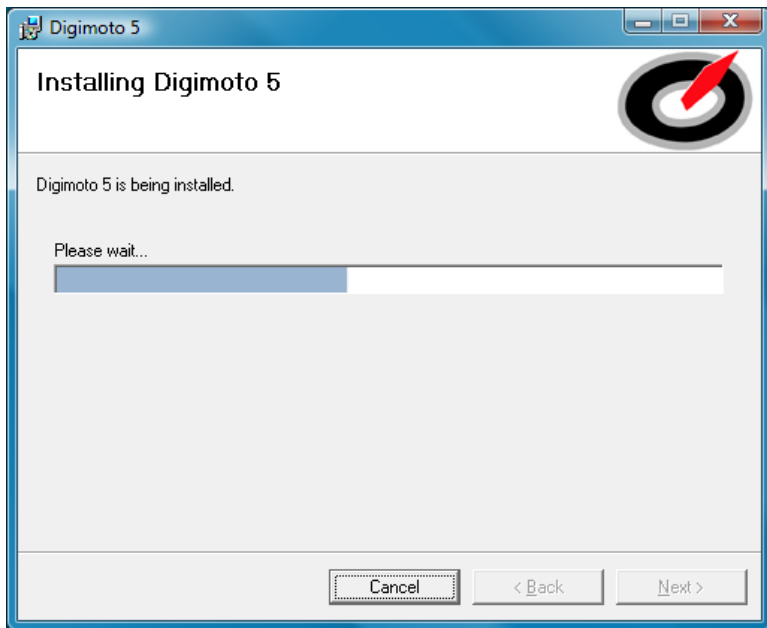
- 5) If you agree to abide by the licensing, click **I Agree**, click **Next**.



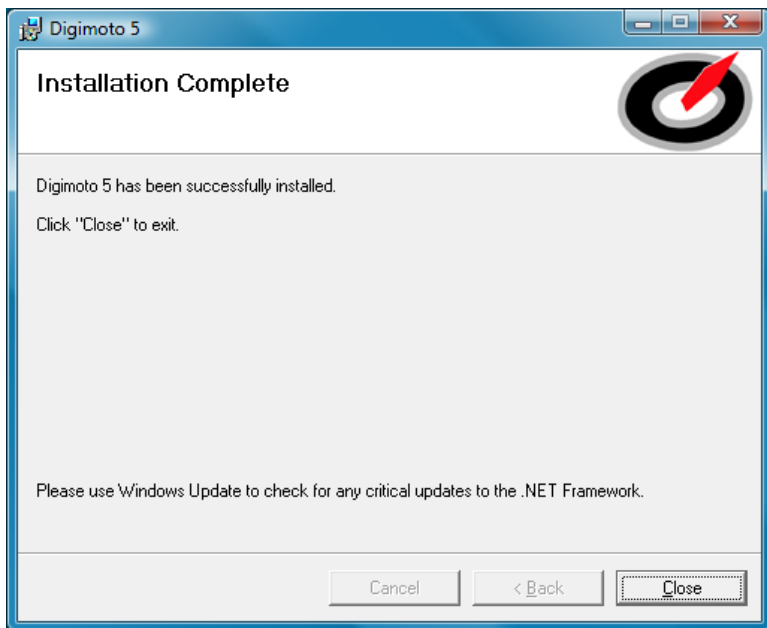
6) Click **Next**.



7) Click **Next** again to install.



8) The software will start to install.



9) Click **Close**. Your Digimoto 5 software is now installed.

To use your new mOByDic Bluetooth OBDII scan tool, you will need to have Blue Tooth on your computer, either built in or in the form of an adapter. If you have purchased the adapter from us, please install the drivers from your Digimoto CD following the directions.