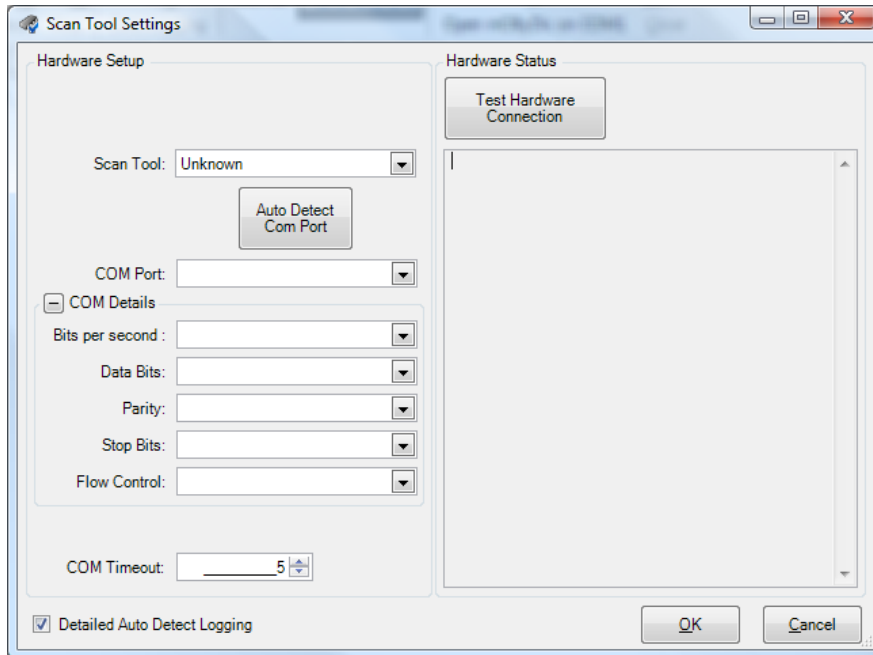


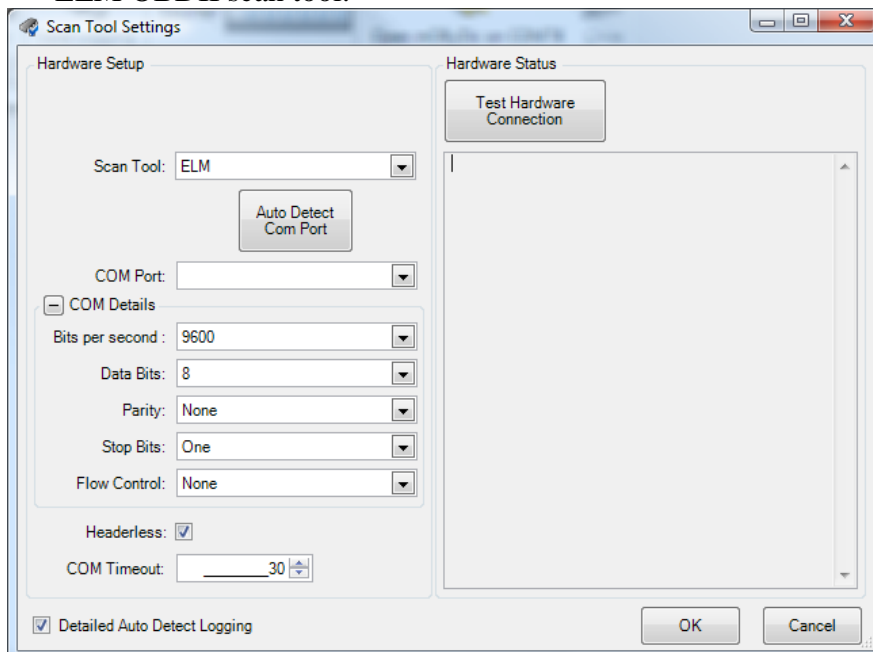
## BEGINNING TO USE DIGIMOTO 5.0

You are now ready to begin getting data from your vehicle. You just need to follow this simple procedure to get started:

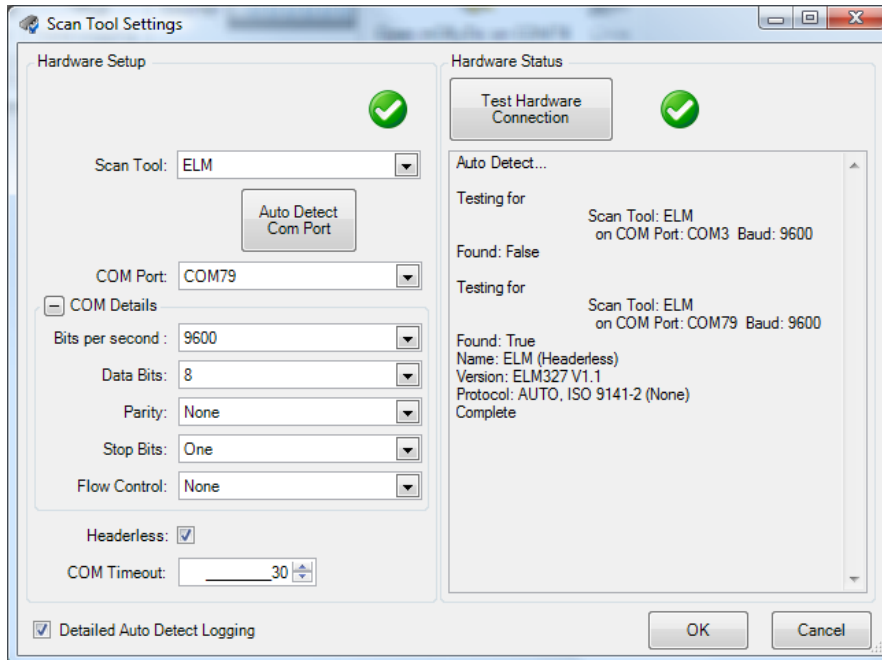
1. Plug the USB or serial end into your computer.
2. Start with your car running, or at least the key on and the Digimoto program closed.
3. Plug the OBDII unit into your car.
4. Wait until the green light comes on, up to a full minute.
5. Launch Digimoto 5.0. You should get this screen. If not you may get here by clicking **Connection**, **Hardware Settings** on the main screen.



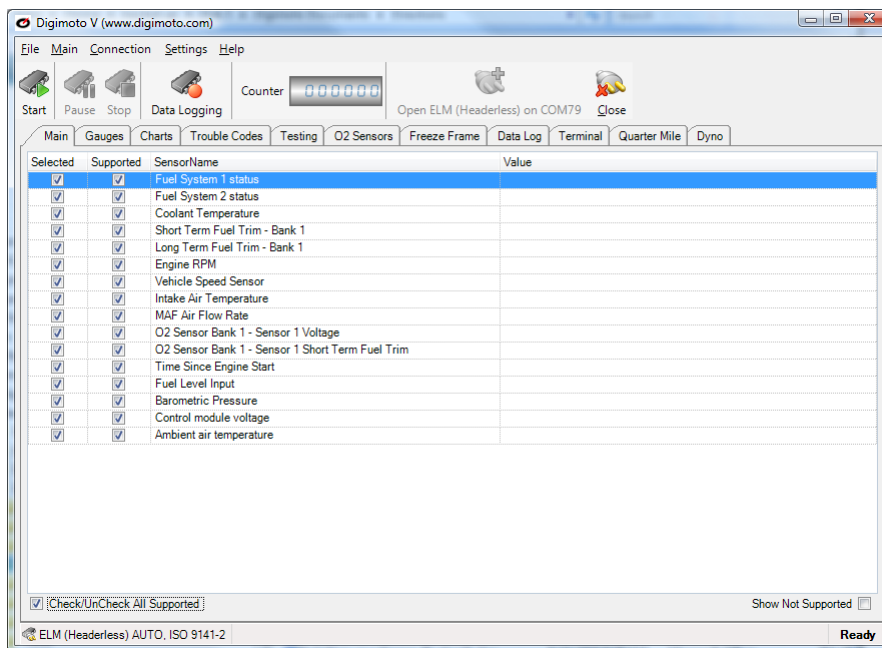
6. Select your **ELM** as your scan tool. Select **Headerless** at the bottom and change the **COM Timeout** to 30. Click the **Auto Detect COM Port** button. The software will begin to cycle through looking for the ELM OBDII scan tool.



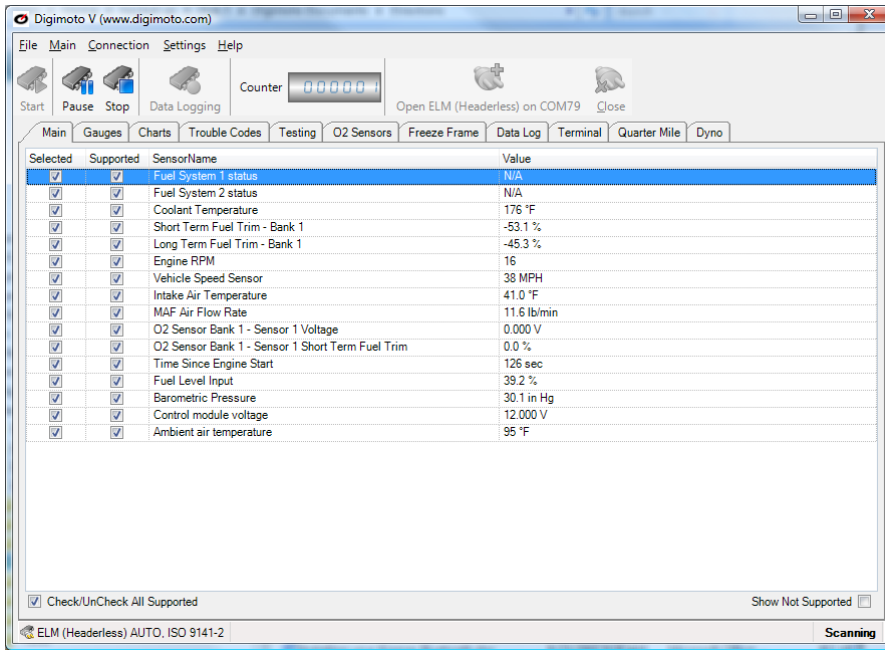
It will spend 30 seconds on each available COM port waiting for a response. In this example it is found on COM Port 79. If you are unable to connect, you may increase the **COM Timeout** to 60; this is the maximum amount of time the ECU has to respond as defined by the SAE.



7. Click **OK**. This returns you to the Main software window. At the top, click Settings, Toolbars, and Image and Text in the pull down menu.



8. Check the **Check/UnCheck All Supported** box. Then click **Start**. You should now begin to see sensor readings.



9. You may now move between the **Main**, **Gauges**, and **Charts** screens. Any other tab will pause the sensor readings. Clicking on unsupported items on any of these screens will throw an error like the one below. Click the button **Remove** to stop trying to read the unsupported item.

